



500 ECO

TREATMENT CHAIR



ENJOY QUALITY AND DESIGN

E

500 ECO

Art. Nr. : 1500 0008

Perfect for I.V.I. treatments. Direct power connection and the integrated power supply unit enable the more powerful operation with high adjustment speed.

Out of the box
solution



DIRECT POWER CONNECTION



Positioning

Efficient, comfortable and fast!



Entering



Patient positioning

5 - 6 SEC
IN OR-POSITION

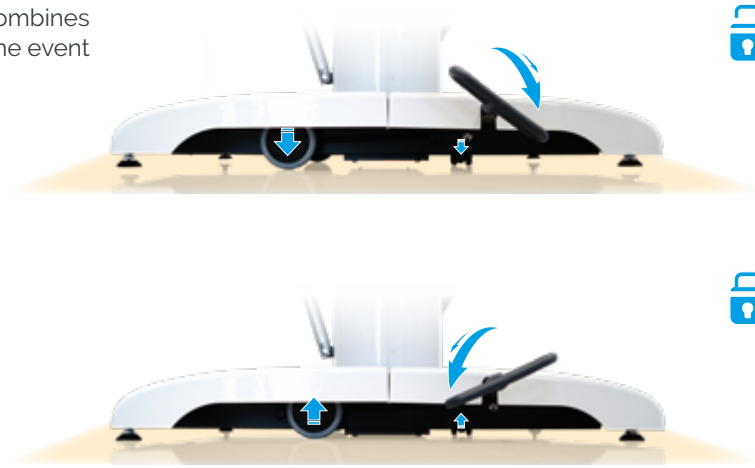
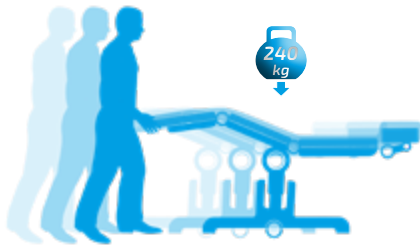


Surgery position

Sturdy base with mono lifting column

Stability / Maneuvering aid

Sturdy stand with three extendable castors combines high stability with simple maneuvering aid (in the event of a change of a location).



Precise positioning of the head part

Headrest

Mechanical adjustment options for comfortable and fine-tuned positioning of the patient's head, adapted to his individual body dimensions.



Positioning by hand control

Multifunctional manual keypad

- CPR button
- Reset button



- Auto run function



- 8 free configurable memory positions



Positioning by foot control

Optional: foot switch

2 memory positions (M1/M2). Item No.: 3351 1029



Technical specifications



Chassis

- Outside length 910 mm
- Outside width incl. foot pedal 600 mm
- Outside width incl. arm rests 845 mm
- White paint finish
- 2 pcs. double castors \varnothing 100 mm
- 2 pcs. rigid castors \varnothing 35 mm
- optional: foot keypad
(2 Memory-Positionen, M1/M2)

Upper frame

- 4-part support frame (head, back, seat, leg part)
- Length 1.950 – 2.230 mm
- Width of upholstery 600 mm
- Entry height 550 mm
- Removeable upholstery

	Angle	Dimensions (L x W)
- Head part	-27° / +180°	280 x 420 mm
- Back part	-23° / +85°	710 x 600 mm
- Seat part	-28° / +3°	510 x 600 mm
- Leg part	0° / +75°	490 x 530 mm
- Height adjustment		von 615 – 890 mm
- Armrests	0° / +180°	455 x 75 mm
- Legroom surgeon		485 – 760 mm
- CPR / flatposition		(height back part) 600 mm

Electrical control

- All components according to IP54
- Manual keypad with 8 individually programmable memory positions, auto run function, reset button
- Foot keypad (optional)

Electric Drives

- Back, seat, leg part, total up / down

Lifting column

- Max. lifting 275 mm
- Max. patient weight 240 kg
- Motors IPX4 with HAL sensors, to be memorized

Seat part / CPR

Back part / Leg part

Height adjustment / Legroom



Application example

assistTrend Item No. : 2500 0002
 + arm rest pair + Item No. : 3300 0000

500 ECO Item No. : 1500 0008



Further technical details

- Chair has detachable, swiveling armrests made completely with PUR foam
- Detachable seat for service friendly access to electric components

- Max. load 240 kg

- Weight 90 kg

Subject to technical modifications.

Paper rolls *stayClean* roll

- white embossed
- 2-ply
- 50 cm x 50 m
- Carton á 9 pieces

Item No.: 3034 0021

Page 75



Colour card

Standard colour

anthracite Item No.: 3037 0052
 + chrom Item No.: 3037 0056

„Pandoria Plus“
 Page 109

„Tundra skai“
 Page 108



Accessories



FUNCTIONAL
CLASS



500 ECO
Item No. : 1500 0008



Multifunctional headrest

Item No.: 3351 1034



Foot switch with 2 free configurable memory position

Item No.: 3351 1029



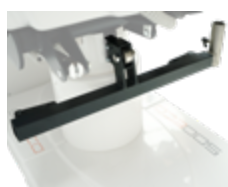
Paper roll holder

Item No.: 3351 1031



stayClean roll paper roll, white embossed, 2-ply, 50 cm x 50 m, carton à 9 pieces

Item No.: 3034 0021



Accessory mounting support, powder coated, with accessory holder, stainless steel

Item No.: 3351 1033



Accessory mounting support, stainless steel

Item No.: 3351 0037



Hand control holder

Item No.: 3351 1023



Monitor arm stainless steel, swiveling, incl. extendible I.V. Pole Ø 25 mm

Item No.: 3024 0014



I.V. Pole stainless steel Ø 25/18 mm, one-hand height-adjustable 1070-1660 mm, 4 hooks, max. 2 kg 8.4 lbs/hook, glass and holder

Item No. 3068 0000



Hand control holder for attachment onto an I.V. Pole Ø 25/18 mm, PVC

Item No.: 3351 1022



Side rails (right+left) swiveling incl. locking, upholstered

Item No.: 3351 1036



Padded arm board with universal joint, with wrist secure straps

Item No. 3078 0000



Norm rail 300 mm seat part

Item No.: 3321 0000



Instrument table 50 x 30 x 1.5 cm, height adjustable, swiveling, detachable, incl. adapter

Item No.: 3065 0000



Foot protection foil

Item No.: 3326 0000



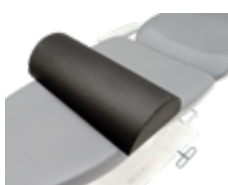
Trapeze cushion, wedge, for back/seat part, black

Item No.: 3022 0005



Full round bolster pillow, cushions knees, 50 x 15 cm, PUD-coated

Item No.: 3050 0000



Half round bolster pillow 60 x 28 x 14cm, cushions knees, PUD-coated

Item No.: 3019 0000



Bodystrap with Velcro straps 2-piece

Item No.: 3083 0000



Inlay head pillow

Item No.: 3325 0000



Instrument table *supportLine* height adjustable 73-98.5 cm

Item No.: 3351 0026



Instrument table *supportLine plus* height adjustable 93-118.5 cm

Item No.: 3351 0045

"Tundra skai"



eyeForce 1800 0000



500 XLE 1500 0006



500 XLE comfort 1500 0006
+ 3037 0080



500 bariatric 1500 0002



500 XLS 1500 0005



500 ECO 1500 0008



400 XL 1400 0001



surgiLine Formed seat 2200 0008



assistLine 2400 0015



motionLine 1700 0000



motionLine-E 1700 0001

+ Item No.: 30370....



F6461198
Item No.:134



F6461210
Item No.:057



F6461636
Item No.:094



F6461230
Item No.:058



F6461610
Item No.:153



F6461495
Item No.:067



F6461453
Item No.:062



F6461196
Item No.:051



F6461204
Item No.:055



F6461273
Item No.:006



F6461338
Item No.:008



F6461456
Item No.:001



F6461581
Item No.:073



F6461496
Item No.:068



F6461609
Item No.:076



F6461608
Item No.:075



F6461550
Item No.:070



F6461288
Item No.:007



F6461354
Item No.:011



F6461350
Item No.:010



F6461357
Item No.:060



F6461195
Item No.:050



F6461197
Item No.:052



F6461205
Item No.:056



F6461356
Item No.:059



F6461381
Item No.:119



F6461199
Item No.:054



F6461454
Item No.:063



F6461557
Item No.:072



F6461556
Item No.:071



F6461455
Item No.:064



F6461543
Item No.:109



F6461343
Item No.:009



F6461542
Item No.:069



F6461607
Item No.:074








F6461457
Item No.:065



F6461458
Item No.:066

"Pandoria plus"



	eyeForce	1800 0000
	500 XLE	1500 0006
	500 XLE comfort	1500 0006 + 3037 0080
	500 bariatric	1500 0002
	500 XLS	1500 0005
	500 ECO	1500 0008
	400 XL	1400 0001

+ Item No.: 3037 0136
+ Item No.: 3037 0...

				
weiß F6413046 Item No.:053	hellbeige F6413047 Item No.:141	kiesel F6413048 Item No.:158	birke F6413049 Item No.:159	smoke F6413050 Item No.:221
				
silbergrau F6413075 Item No.:275	platin F6413053 Item No.:161	anthrazit F6413076 Item No.:276	schwarz F6413052 Item No.:170	schoko F6413051 Item No.:160
				
gletscher F6413055 Item No.:162	sky F6413074 Item No.:277	royal F6413056 Item No.:163	smaragd F6413073 Item No.:278	kaktus F6413077 Item No.:281
				
feuer F6413058 Item No.:166	kirsche F6413079 Item No.:279	fuchsia F6413078 Item No.:280	mais F6413057 Item No.:164	limone F6413054 Item No.:165

Upgrade your OR to perfection.



eyeForce



500 XLE



500 XLE comfort



500 bariatric



500 XLS



500 ECO



400 XL



motionLine



motionLine-E



surgiForce



surgiForce light



surgiTrend



surgiLine



stayClean wipes



stayClean



staySoft



stayClean roll



assistTrend



assistPro F



assistPro H



easyPro F



easyPro H



easyPro R



assistLine



supportLine



supportLine plus



CONTACT US

UFSK-International OSYS GmbH
Kirchhoffstraße 1
93055 Regensburg
Germany

Phone +49(0)941 78862 15
Fax +49(0)941 78862 35
Mail info@ufsk-osys.com
Web ufsk-osys.com

MADE IN GERMANY
Design | Construction | Manufacturing